



# NARFE NEWSLETTER

GREATER BOWIE-CROFTON AREA

CHAPTER 1747

National Active and Retired Federal Employees Association

Volume 31, No. 3

www.NARFE1747.org

November 2010

**GENERAL MEMBERSHIP MEETINGS** are held at Bowie City Hall (2614 Kenhill Drive, Bowie) on the third Thursday of the month at 10:00 AM in Conference Room 204. There is never a charge to attend and all meetings are open to the public.

**EXECUTIVE BOARD MEETINGS** are held the first Thursday of the month at 10:00 AM in Conference Room 125, Bowie Senior Center. All chapter members are welcome.

**NOTE:** Chapter meetings are cancelled when Prince George's County schools are closed due to inclement weather. Otherwise, meetings are held as scheduled.

## COMING ATTRACTIONS

- ❖ *General Meeting.* Thursday, November 18, Mr. John Hatton, Legislative Department, NARFE National Headquarters, explains how Federal legislation affects our benefits.
- ❖ *General Meeting.* Thursday, December 16, Holiday Luncheon (*Details, page 3.*)

## PRESIDENT'S MESSAGE

*Dorothy Campbell*

### In the Season for Saying Thanks, THANKS!

I can't believe 2010 is nearly over and we're nearing the traditional time to be thankful. But it's here and it's a good time to voice my thanks and those of the executive board for several things: memorable membership meetings; our record turnout to help make the 2010 MD-Federation mini-convention a success; and our celebration of our chapter's 30th anniversary. Add that we've involved some new volunteers in ongoing jobs, honored chapter members for their activism – and mourned others and their family members when they passed on. We've extended our website to link up with the MD-Federation, national NARFE and other organizations. We've participated in many community activities, and have been rewarded for doing so. We've gone to bat for legislation for seniors and to preserve our earned retirement benefits. We've elected new national officers, shored up our flagging national resources, and tried our outmost to build and retain our membership. We've done lots to be proud of.

None of this happened by itself. All of it took effort, more from some than others, but together we made

it all work. And that's something we must continue to do.– so that the chapter prospers and grows. And it will be easier, much easier, if even more members give a little bit more.

Yes, all that was a lead-in to another of my ongoing calls for volunteers. That will never stop since no organization can run efficiently and smoothly with only a few dedicated members doing everything.

### A Quick Reminder on Saving Money

Before the national dues increase becomes effective next year, those of you who pay annual dues should quickly consider changing from paying annually to paying the current rate dues for the next three years and save \$28. Or make the smart, easy switch to dues withholding – which again saves you money. You'll achieve a substantial savings having your dues deducted automatically from your annuity check – and neither national NARFE nor the chapter will have to send you reminders and you won't have to write checks and mail them in. You can't lose!

For more information, check out our web site, the national NARFE website, or contact me or any other officer.

### NARFE and Your Computer

Keeping on top of NARFE issues today is simple with computer access. There's the national magazine, the MD-Federation newsletter, the chapter newsletter, and much more that you can access with your fingertips. In fact, when you use our website, all it takes is the click of a mouse. You can now even link to several other useful places through narfe1747.org, such as the MD-Community Services Locator (our guests in Sep-

Continued on page 2

Continued from page 1

tember) where you can locate nearly every possible service in our state which you might need. No longer do your fingers have to walk through countless yellow pages to find a service you need – now Chapter 1747 and MD-CSL have made it easy for you with a computer. Try it. It's a great service, and it's a cinch to use. Even I, who's not really computer savvy, can do it.

### Recruitment and Retention

In the next few months you'll be hearing more than ever that we need to not only recruit new members but to keep our current ones. And that's a job for all of us. As a predominantly senior group, we lose members through moves to warmer climes and tax-friendly states, failing health that results in decreasing participation, and of course, death. Those are facts beyond our control. But, with your help, we can reverse our losing trend and build our organization. Keep posted; I'll be announcing new NARFE-building projects, and seeking your assistance. And if you come through in the future as you have this past year, we'll be stronger and better than ever!

And keep in mind that December – with its gift-giving traditions – is fast approaching and a gift of NARFE membership will fit any federal retiree or survivor annuitant, or any active federal employee. And if you act quickly, you can purchase that gift before the price goes up!

## FEDERAL LEGISLATION

The current lame-duck congressional session has, in fact, done almost nothing. To find out what's happening in DC, come to our November meeting. You can also check NARFE's national web site: [www.NARFE.org](http://www.NARFE.org) or call toll-free, 24 hours a day, at 877-217-8234.



## STATE LEGISLATION

*Ed Bice*

The State Legislative Committee (SLC) has had some recent changes. Dick Strombotne has stepped down as Vice Chair. Sally Nichols, our long time Secretary, has moved out of state. Ed Wurmb, President of Chapter 306 Hagerstown, has been elected as the new Vice Chair. Bob Wesloh, President, Chapter of 1734 Howard County and a long-time and valuable member of the SLC passed away in September. Bob will be missed by all in the Federation.

After Election Day in November, the SLC will proceed to get sponsors for our priority legislation by using the data in the survey responses and our knowledge of past sponsorship. This effort will require the making of visits and written communication with legislators.

Members of the SLC and chapter members from around the state continue to interact with lawmakers and other interested groups by attending fundraisers and seeking their support for our priority issues. I recently spoke to two groups introducing our issues: the Alliance for Retired Americans (ARA) DC/MD is an organization composed of retired members of the various unions in the AFL-CIO; and the Prince George's County Commission for Veterans. The Commission membership represents all of the various veterans organizations in our state.

## PROGRAMS

*Howard Dobson*

*November 18* ♦ Mr. John Hatton from the Legislative Department at NARFE National Headquarters will talk on legislative priorities. and answer questions on healthcare reform laws, the fiscal commission, and other current topics.

*December 16* ♦ We will enjoy our Holiday Luncheon at the Nautilus Diner Restaurant.

### A 'Distinguished' Group of Honorees

For 13 years, Blue Cross/Blue Shield Representative Jennifer Malave has presented the company's annual Distinguished Annuitant Award to Chapter 1747 activists. This year's award, to Barbara Wheatley, was announced at the September membership meeting. Previous honorees, seated (l-r) are Ruth Kluth (2001), Dorothy Campbell (2008) and Jennifer Malave. Standing (l-r) are Dave Galliat, Tom Page and Jackie Calloway (2004), Al Golato and Ed Bice (2009) and Calvin Dorn (2000). Unavailable for photo: George Jones, (1998), Mary Catloth (2002), Doris Gordon (2003), Paul Schuette (2005) and Barbara Wheatley (2010). Three of the honorees have passed away: Sylvania Krasney (1999), Roger Leonard (2006) and Mayer Weinblatt (2007).

# Holiday Luncheon

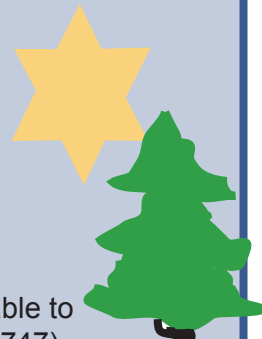
## Nautilus Diner Restaurant

1709 Transportation Blvd, Crofton, MD

Thursday, December 16, 2010

Social 11:30 AM. Cash Bar

Lunch 12:00 Noon



### Choice of:

- Corned Beef and Cabbage
- Meat Loaf with Potato and Vegetable
- Broiled Tilapia with Potato and Vegetable
- Half Chicken with Potato and Vegetable
- Vegetarian meals are available upon request.

### Includes:

- Cup of Soup
- Coffee or Soda
- Strawberry Shortcake, Coconut Cake or Chocolate Cake

Cost \$21.50

(Make checks payable to NARFE Chapter 1747)

Sign up at the chapter meeting.

For specific payment or meal arrangements

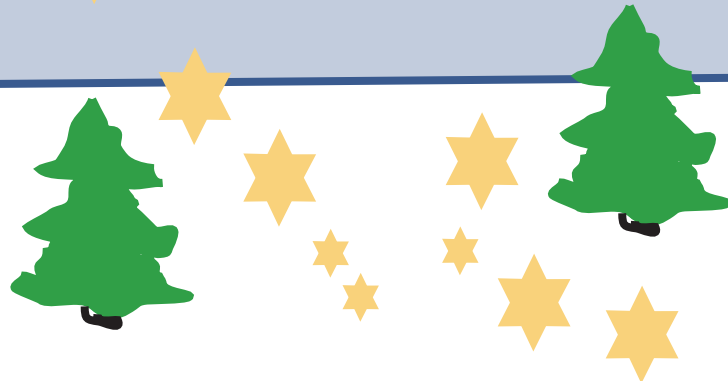
Call Howard Dobson

301-809-1645

No later than Monday, December 13, 2010



Amy Billing, of the MD Community Services Locator, showed members at the September meeting how to use the online service to find a wide variety of useful services throughout the state.



## WELCOME NEW MEMBERS

**Robert Hunter**

**Gloria Jarmon**

## CHAPTER 1747 BUDGET REPORT

Balance on: September 1, 2010	\$3904.65
Receipts:	305.97
Disbursements:	880.80
Balance on: September 30, 2010	\$3409.82

## DAYS TO REMEMBER

- November 2 – Election Day
- November 7 – Daylight Savings Time ends
- November 8 – Health Plan Open Season Begins
- November 11 – Veteran's Day
- November 25 – Thanksgiving

## CONDOLENCES

The following chapter members passed away recently. Our prayers and sympathy go out to their families and friends.

**Bernadette J. Frank**

**Robert W. Singleton**

**Whitney E. Reed**

## Greater Bowie-Crofton Area NARFE News

NARFE News is published ten times a year (monthly from September through June) by Greater Bowie-Crofton Area Chapter 1747, National Active and Retired Federal Employees Association, P. O. Box 504, Bowie, MD 20718-0504.

Vol. 31, No. 3

Dues payments, gifts, and contributions to NARFE are not deductible as Charitable Contributions for income tax purposes.

## CHAPTER BOARD

### Elected Officers

President	Dorothy Campbell	301-464-6372	Dcbowie@aol.com
1st Vice President	Howard Dobson	301-809-1645	hrd789@aol.com
2nd Vice President	Vacant		
Secretary	Lillie Watson	301-262-5926	lwatson16@hotmail.com
Treasurer	Bob Cullen	301-262-4783	ba3537@aol.com
Assistant Treasurer	Louise Cole	410-672-6528	col9135@aol.com

### Committee Chairs

Federal Legislation	Joseph Young	301-218-5187	JosephYoung48@yahoo.com
Membership	Lillie Watson	301-262-5926	lwatson16@hotmail.com
Newsletter	Jessica Forman	843-347-9287	jessicaforman@yahoo.com
Programs	Howard Dobson	301-809-1645	hrd789@aol.com
Public Relations	Dorothy Campbell	301-464-6372	Dcbowie@aol.com
Service Officers	Bob Cullen	301-262-4783	ba3537@aol.com
	Paul Schuette	301-262-0975	paulschuette@verizon.net
	Lee Tuveson	301-262-3164	ltuveson@verizon.net
State Legislation	Ed Bice	301-464-3748	DE3637@verizon.net

### Activity Coordinators

Alzheimer's Fund	Maria Francer	240-245-4328	
Community Events	Ed Bice (Bowie)	301-464-3748	DE3637@verizon.net
	Louise Cole (Odenton)	410-672-6528	col9135@aol.com
	Donna Minner (Crofton)	410-721-9799	
Meeting Sign-In/Greeter	Mary Catloth	301-390-2206	mcatloth@aol.com
NARFE-Net Coordinator	Howard (Flash) Gordon	301-464-2745	flash@acm.org
NARFE-PAC	Ed Bice	301-464-3748	DE3637@verizon.net
Photographer	Frank Lee	410-672-5065	fllee0716@verizon.net
Refreshments	Jack Calloway	301-262-3457	
	Dave Galliard	301-262-7261	
	Tom Page	301-262-3418	
Sunshine	Marjorie Laios	301-262-1566	

***THURSDAY, NOVEMBER 18***  
***John Hatton, Legislative Department, NARFE National HQ, speaks on NARFE priorities and answers questions.***